

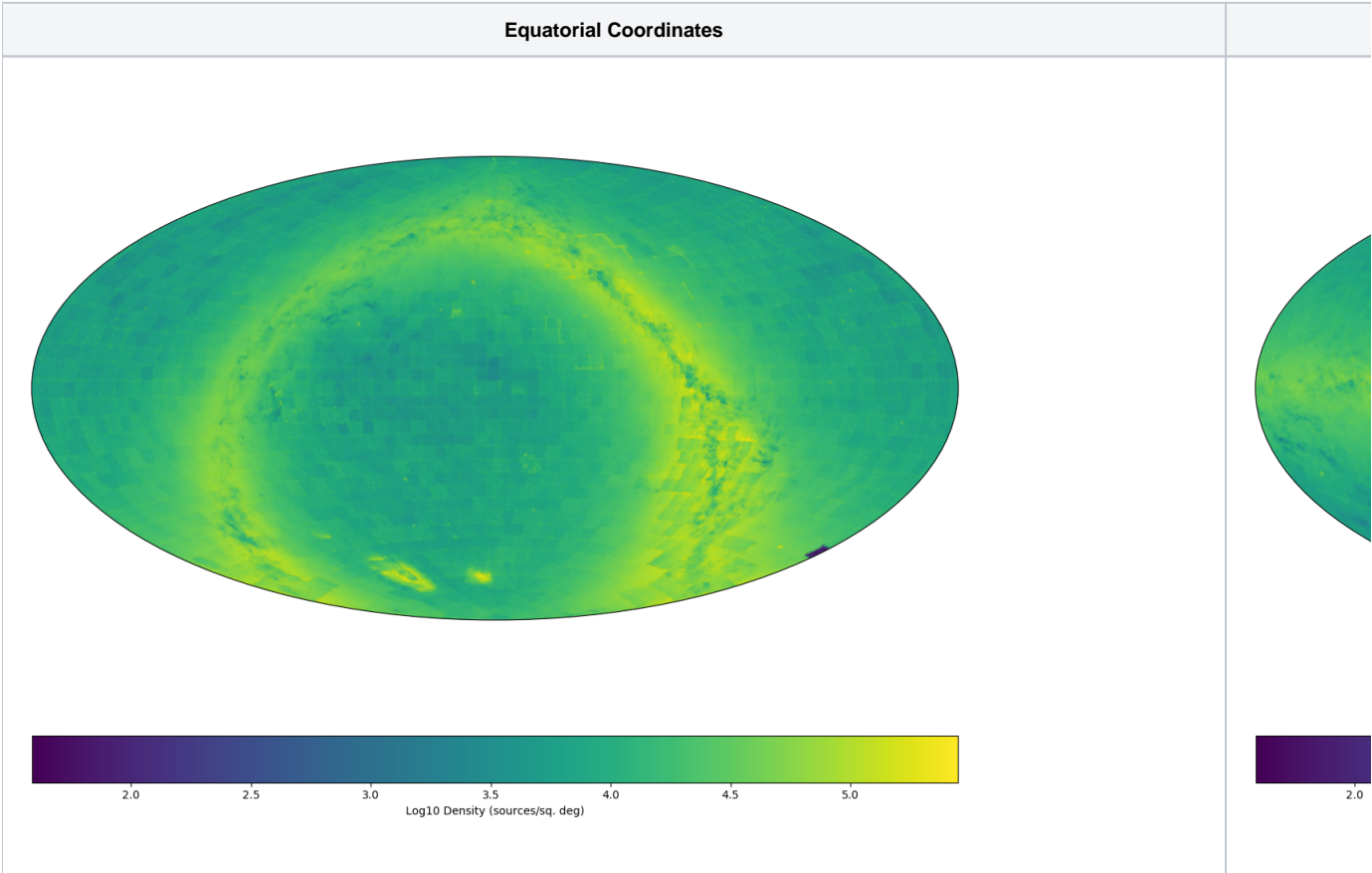
# Sky Coverage / Statistics

Here we summarize the coverage of GSC 2 and the various surveys that have been added to it.

- [Original GSC 2](#)
- [GSC 2.4.1](#)
- [GSC 2.4.2](#)

## Original GSC 2

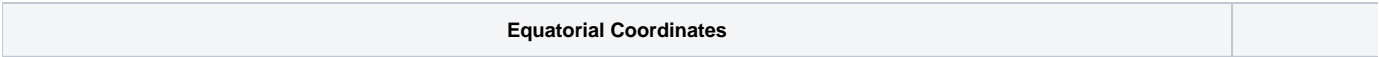
Original GSC 2 (2.3.3) sky coverage. Scale is logarithmic with  $\log_{10}(\text{sources/square degree})$ .

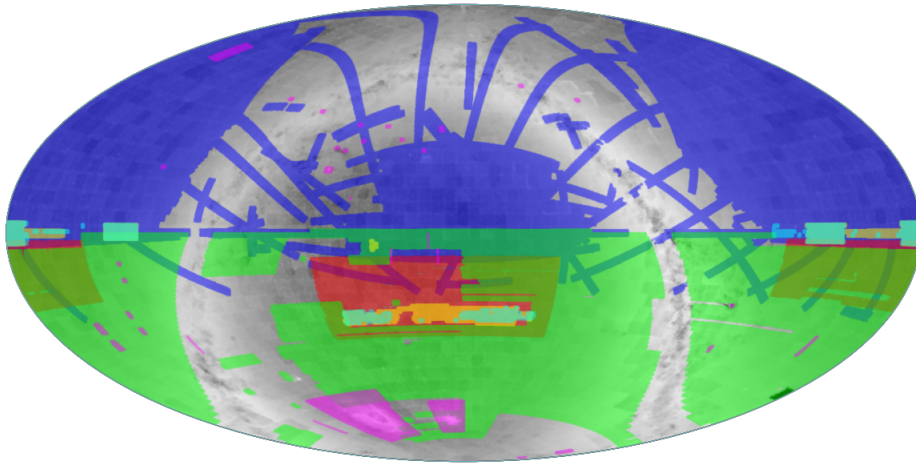


## GSC 2.4.1

GSC 2.4.1 coverage with original GSC233 in grey and additional catalogs overlaid in color: SDSS-DR13 (blue) + VHS-DR4 (green) + ATLAS-DR3 (red) + VIKING-DR2 (yellow) + 2MASS-6x (purple) + KIDS-DR3 (cyan).

Other catalogs included as part of GSC 2.4.1 are all-sky; ie, GAIA-DR1, UCAC5, 2MASS-PSC, 2MASS-XSC. Note that all UCAC5 are GAIA-DR1 sources.

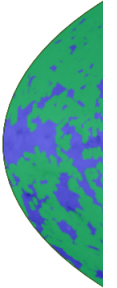
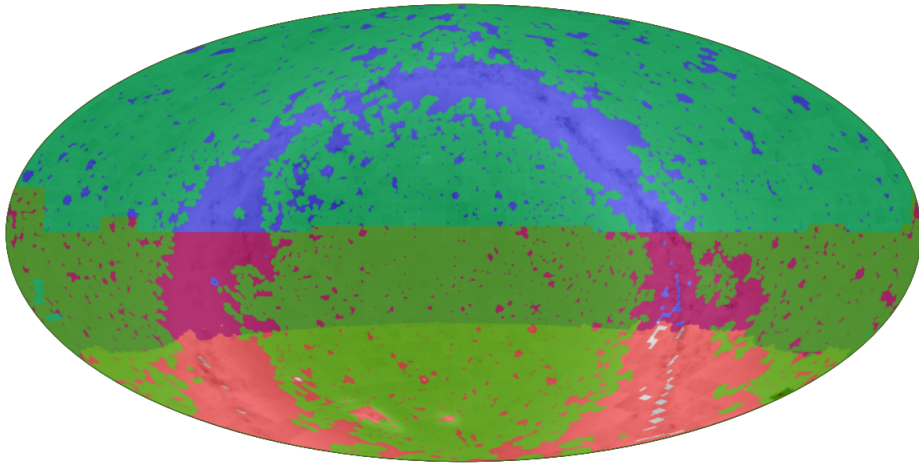




## GSC 2.4.2

GSC 2.4.2 includes additional catalogs improving coverage as can be seen below. For clarity we omit those included as part of GSC 2.4.1 (above). New catalogs include: PanSTARRS-DR1 (blue), SkyMapper DR1 (red), and GALEX AIS (green)

Equatorial Coordinates
------------------------



The current sky coverage for GSC 2.4.2 is below. Scale is logarithmic with  $\log_{10}(\text{sources/square degree})$ .

